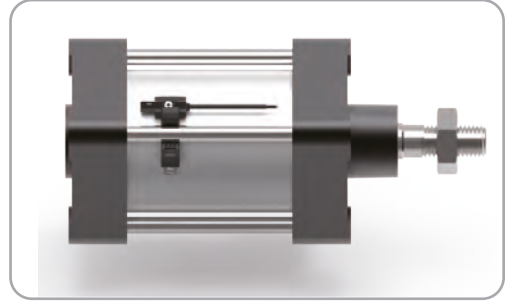


Clamp Series

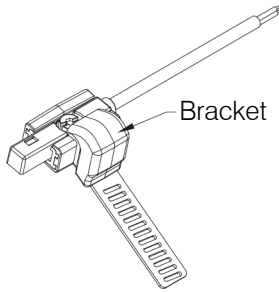
WST is designed for WT-32 & WT-40 & WT-50 & WT-65 & WT-75 series sensor on tie-rod cylinders.



How to mount:

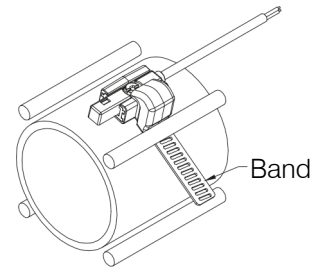
Step 1

Fix sensor on bracket with 2mm hexagon wrench or flathead screwdriver.



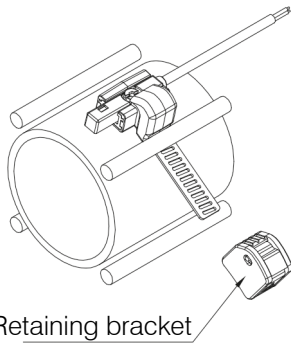
Step 2

Insert the band between cylinder tube and tie-rod.



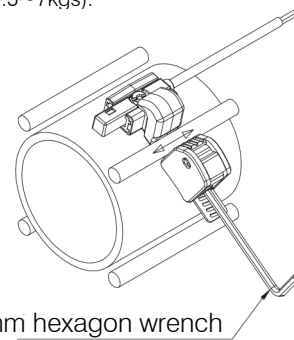
Step 3

Slide the retaining bracket on to the band.



Step 4

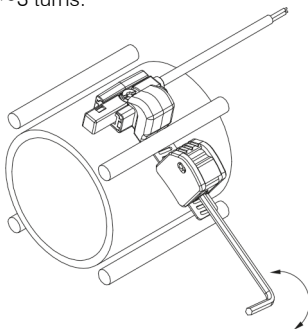
Adjust by moving bracket to most ideal sensing position and tighten screw. (Torque:5~7kgs).



How to dismantle:

Step 1

Use 2mm hexagon wrench release the screw for 2~3 turns.



Step 2

Use 2mm hexagon wrench to lift up the screw cap to remove the retaining bracket.

